

## OTTAWA PRO SERIES

On-line UPS double conversion with galvanic isolation from 6 to 300KVA



### Description

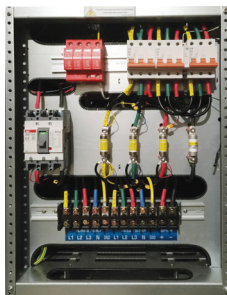


The Ottawa Pro series UPS are high performance power supply systems with three-phase input and three-phase output and galvanic isolation by high performance inverter output transformer designed to supply high-quality power on a permanent basis.

Advanced diagnostics and unit information allow users to monitor system parameters and alarms, check the status of the battery and provide access to the history of events through the system software or multi-language screen.



Ottawa Pro Series



Frontal connections Ottawa Pro 6-30 KVA

### Features

- > On-line UPS double conversion
- > Three-phase input/three-phase output
- > DSP control technology
- > Power: from 6 to 300 KVA
- > Galvanic insulation by output transformer
- > Reduced harmonic distortion
- > RFI filter
- > Acoustic and luminous signalling
- > Reduced harmonic distortion of output signal
- > High efficiency
- > Output power factor 0.9
- > Software included for System Monitoring
- > Extended battery options available
- > RS232/ SNMP-RJ45
- > GPRS module for mobile network remote monitoring (optional)
- > Redundancy Parallel
- > Touch screen LCD display
- > Manual bypass
- > Battery test

- 1 Surge Arrester
- 2 Input / Output / Manual bypass
- 3 Battery Breakers
- 4 Input / DC Fuse
- 5 Terminals

domestic use

network

data centers

medicine

telecommunications

security

industrial



## GENERAL SPECIFICATIONS

Model	Ottawa Pro															
Reference	Consult models and references depending on power and autonomies															
Power KVA	6	10	15	20	30	40	50	60	80	100	120	160	200	250	300	

## GENERAL

Technology	On Line, double conversion with galvanic isolation															
Efficiency	ECO Mode >98%, Inverter > 92%, AC-AC > 91%															
Overload	125% - 12 min / 150% - 1 min															

## INPUT

Voltage range	304~456 Vac															
Frequency	50 Hz ±12%															

## OUTPUT

Power (KVA/KW)	6/5.4	10/9	15/13.5	20/18	30/27	40/36	50/45	60/54	80/72	100/90	120/108	160/144	200/180	250/225	300/270	
Voltage	380,400,415±1% Vac															
Frequency	50Hz ±0.1% (battery mode)															
Type of wave	Pure sinewave															
Harmonic distortion	THD <2% (linear load) / <5% Non linear load															
Crest factor	3:1															

## BATTERIES & BACKUP TIME

Standard battery	Pb VRLA (lead battery with anti-leak seal), 384 VDC															480VDC
Backup time	Up to many hours (depending on connected load)															

## INDICATORS

LCD display	Operating load/Battery status and voltage/ Input and output voltage measurement / Input and output frequency measurement/Supplied power															
Leds	Mains on/ By-pass /Inverter/Low battery/Overload/UPS failure															
Acoustics	Mains failure, overload, low battery															

## COMMUNICATION

Control software	UPSilon 2000															
Communications	Connector RS232/RJ45															
Indicators	Automatic functions checking: voltage, input/output frequency, load status, battery capacity, temperature, historic events, system analysis,7 alarms type															
SNMP card (optional)	RJ45 SNMP Ethernet converter															

## PROTECTION

Protections	Current limitation, overload, short-circuit & overtemperature															
Maintenance bypass	Yes															
RFI filter	Yes															
Battery discharge protection	Yes															

## STANDARDS

Marks	CE															
Directives	EN 62040-1-1:2003 / EN 50091-2:1996															

## OTHERS

Operation temperature	0-40°C																							
Relative humidity	0-95% (non condensing or ice)																							
Altitude without decreasing power	1000 over sea level																							
Acoustic level	≤50dBA								≤65dBA															
Dimensions WxLxH (mm)	400x750x980				410x810x1080				500x980x1330				500x1060x1430				1100x1200x1800				1182x1600x1962			
UPS Weight * (Kgs)	140	150	165	188	245	275	350	365	445	560	586	1150	1240	1550	1750									

\* External batteries, consult weights and dimensions for other autonomies.

Specifications may be changed without notice